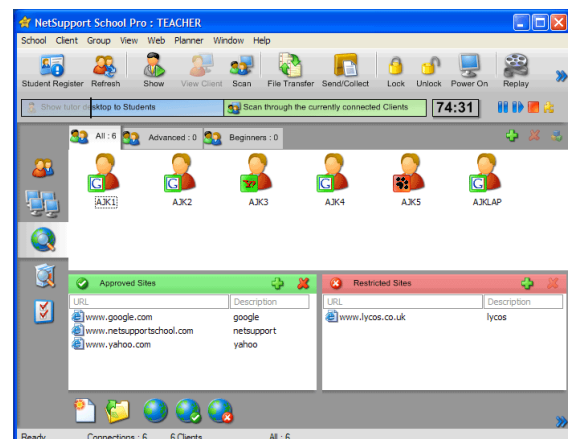
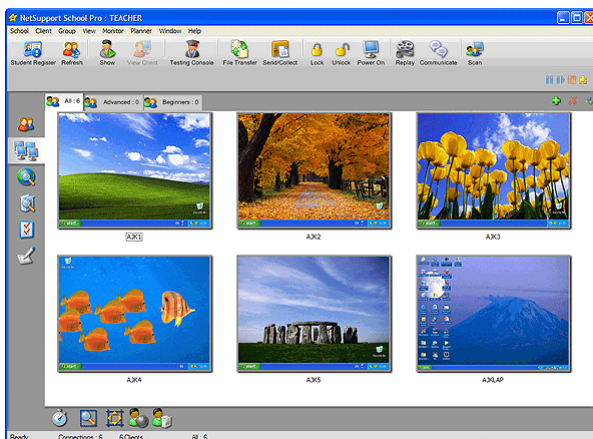


**NetSupport School** is the state of the art software solution for optimising training in networked classrooms. It gives teachers the ability to interact with their students on a one to one basis, to a pre-defined group or the overall class.

Combining advanced multiple PC monitoring with an innovative customised test designer and the ability to create automated lesson plans, this latest version meets the challenge and requirements of today's modern classroom.

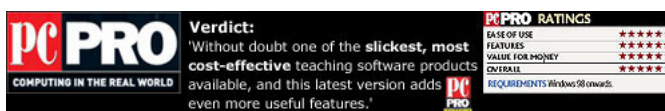
However, Providing the very latest IT infrastructure for delivering lessons is only half the equation. Ensuring that the classroom PCs are used in the most effective way represents the other half.

With NetSupport School, full Application and Internet control is offered as standard, allowing individual or overall class restrictions to be applied whereby only approved websites are visited and appropriate applications are available to the students. Combined with the ability to blank the students screens or to simultaneously monitor individual or all student PCs either full screen or thumbnail screen mode and complete Student attention and focus is encouraged at all times.



Key feature highlights in NetSupport School are :

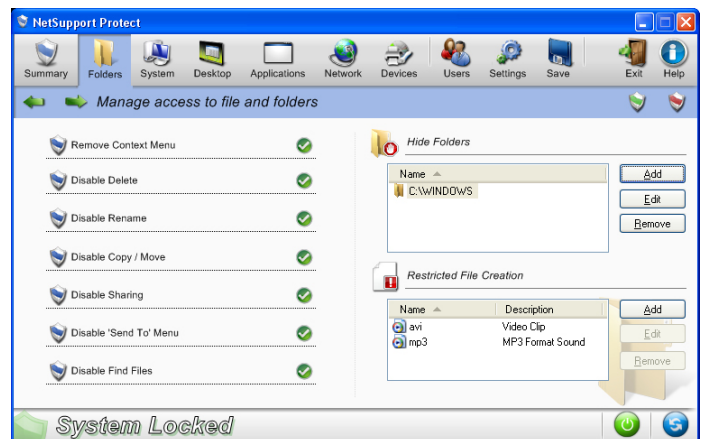
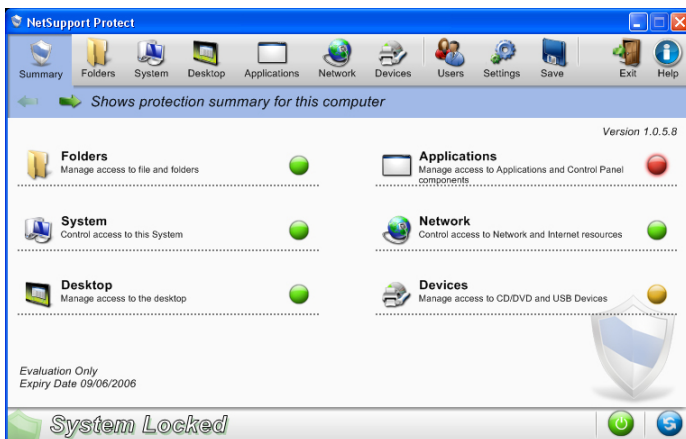
- Monitor multiple Student screens simultaneously.
- Show Teachers Screen or Video to all students.
- Hand out and Collect coursework over the network.
- Control and Monitor Internet usage.
- Control and Monitor application usage.
- Conduct Instant surveys in the class.
- Create and deliver tests using the NetSupport Testing module.
- Real-time marking and distribution of test results.
- Share an interactive "virtual" whiteboard with the class.
- Scan all or selected Students at a pre-defined interval.
- Take control of an individual Student's PC for hands on instruction.
- Create automated lesson plans to schedule the class.
- Conduct group Chat and messaging.
- Annotate the Teacher or Students Screen to aid in instruction.
- Remotely Install across a network.
- Remote Power ON / OFF and logout in a single action.



## Prevent - Protect - Preserve

**NetSupport Protect** delivers a secure, reliable and productive computer environment. With its extensive list of security features and intuitive format, IT administrators can use NetSupport Protect to guarantee that students are getting the most beneficial use of their computing experience, whilst at the same time safeguarding both the configuration and content on their systems.

Simple to use, safe and secure, NetSupport Protect is the ideal choice for IT administrators and technology coordinators. Presented in a simple and intuitive interface, system control can be configured in minutes and allows either individual or central control of security settings.



Key feature highlights in NetSupport Protect are :

- Prevent copying, deletion and renaming of files and folders.
- Hide folders and restrict creation of defined file types.
- Restrict changes to the desktop, taskbar and system settings.
- Restrict shutdown, logoff, lock and password changes.
- Protect the operating system and computer settings.
- Lock control panels, task manager, command prompt and registry.
- Restrict user-defined applications from running.
- Restrict available network drives and new drive mappings.
- Prevent access to windows system tools.
- Prevent web browsers from running.
- Restrict creation and deletion of system printers.
- Control access to USB and CD/DVD devices.
- Either Disable USB storage devices, allow read only or prevent application launch.
- Prevent users from installing unauthorised software.
- Apply policies to all users, or exclude specified accounts.
- Share security configurations across a network.



Using NetSupport Protect IT administrators can prevent unwanted changes to the OS, control the creation of content, restrict unwanted file downloads and control application usage. With easy to adopt end point security, administrators can avoid the introduction of harmful or unwanted content from external sources yet retain the flexibility to utilise existing technology.

